

STOCKCAP®

Custom Solutions

HVAC Edition



Vinyl



Rubber



Plastic

Ready to Ship millions
millions in stock!
millions



For additional products visit:
WWW.STOCKCAP.COM

Short Caps

Flexible Short Caps can be applied quickly and easily. No matter what the application, they fit snugly without cracking or splitting. Short Caps also possess excellent insulation qualities and resist weather, moisture and chemicals. These caps are also available in high temperature resistant material withstanding temperatures up to 446° F (230° C) for extended periods without breaking down.



✓ Ready to Ship
 millions
 millions in stock!
 millions

Product Features

- Thousands of sizes
- Large selection of colors
- Hundreds of design possibilities

Applications

- Thread Protectors
- Masks (for painting, plating, coating, shot blasting)
- Insulators
- Decorators
- Seals
- Color Coding



Short Caps (for longer lengths see pages 6 & 7)

Inside Diameter "A"		Max Inside Length "B"		Nominal Wall Thickness "C"		Ready to Ship
In.	mm	In. ± .062	mm ± 1.57	In. ± .010	mm ± .25	
.062	1.57	.750	19.05	.028	.71	✓
.080	2.03	.750	19.05	.028	.71	✓
.093	2.36	.750	19.05	.028	.71	✓
.112	2.85	1.000	25.40	.030	.76	✓
.125	3.18	1.500	38.10	.033	.84	✓
.137	3.48	1.500	38.10	.033	.84	✓
.142	3.61	1.500	38.10	.033	.84	✓
.151	3.84	1.500	38.10	.038	.97	✓
.156	3.96	1.500	38.10	.038	.97	✓
.172	4.37	1.500	38.10	.038	.97	✓
.187	4.75	1.500	38.10	.038	.97	✓
.207	5.26	1.500	38.10	.038	.97	✓
.219	5.56	1.500	38.10	.038	.97	✓
.234	5.94	1.500	38.10	.038	.97	✓
.240	6.10	1.500	38.10	.038	.97	✓
.250	6.35	1.500	38.10	.043	1.07	✓
.281	7.14	2.500	63.50	.043	1.07	✓
.313	7.95	1.500	38.10	.043	1.07	✓
.331	8.41	1.500	38.10	.043	1.07	✓
.343	8.71	2.500	63.50	.043	1.07	✓
.375	9.53	1.500	38.10	.043	1.07	✓
.406	10.31	2.500	63.50	.055	1.40	✓
.420	10.67	1.500	38.10	.055	1.40	✓
.437	11.10	1.500	38.10	.055	1.40	✓
.446	11.33	1.500	38.10	.055	1.40	✓
.468	11.89	2.500	63.50	.055	1.40	✓
.500	12.70	1.500	38.10	.055	1.40	✓
.531	13.49	2.500	63.50	.060	1.52	✓
.562	14.28	1.500	38.10	.060	1.52	✓
.625	15.88	1.500	38.10	.060	1.52	✓
.687	17.45	1.500	38.10	.060	1.52	✓
.730	18.54	1.500	38.10	.060	1.52	✓
.750	19.05	1.500	38.10	.060	1.52	✓
.812	20.63	1.500	38.10	.060	1.52	✓
.843	21.41	1.500	38.10	.060	1.52	✓
.875	22.23	1.500	38.10	.060	1.52	✓
.937	23.80	1.500	38.10	.060	1.52	✓
.950	24.13	1.500	38.10	.060	1.52	✓
1.000	25.40	1.500	38.10	.060	1.52	✓
1.062	26.98	1.500	38.10	.065	1.65	✓
1.125	28.58	1.500	38.10	.065	1.65	✓
1.187	30.15	1.500	38.10	.065	1.65	✓
1.250	31.75	1.500	38.10	.065	1.65	✓
1.313	33.35	2.000	38.10	.065	1.65	✓
1.375	34.93	1.500	38.10	.065	1.65	✓
1.500	38.10	1.500	38.10	.065	1.65	✓
1.625	41.28	1.500	38.10	.065	1.65	✓
1.687	42.85	1.500	38.10	.065	1.65	✓
1.750	44.45	1.500	38.10	.065	1.65	✓
1.875	47.63	2.000	50.80	.065	1.65	✓
2.000	50.80	1.500	38.10	.065	1.65	✓
2.125	53.98	1.750	44.45	.065	1.65	✓
2.250	57.15	1.500	38.10	.065	1.65	✓
2.375	60.33	1.500	38.10	.065	1.65	✓
2.500	63.50	1.500	38.10	.065	1.65	✓
2.625	66.68	1.750	44.45	.065	1.65	✓
2.750	69.85	1.500	38.10	.065	1.65	✓
3.000	76.20	1.500	38.10	.065	1.65	✓
3.125	79.38	1.750	44.45	.065	1.65	✓
3.250	82.55	1.500	38.10	.065	1.65	✓
3.500	88.90	1.500	38.10	.065	1.65	✓
3.625	92.08	1.750	44.45	.065	1.65	✓
4.000	101.60	1.750	44.45	.065	1.65	✓
4.750	120.65	2.000	50.80	.065	1.65	✓

✓ 360 Stock Choices 45 diameters in 4 lengths!

(Your choice of Red or Black in 1/2", 3/4", 1", 1 1/2" lengths)

Length: Short Caps are available in any length, in 1/16" (1.59 mm) increments. Minimum length is .187" (4.75 mm). Inside length tolerance is ± .062" (1.57 mm). Inside length is measured along the side wall to the radius of the closed end, not down the center.

Wall thickness "C" is measured .250" (6.35 mm) from the open end, increasing slightly toward the closed end. Wall tolerance is ± .010" (.25 mm).

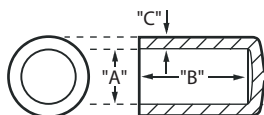
ID: Because Short Caps are soft and flexible, we suggest an undersized diameter for a tight fit. For example, if your outside diameter is .500" (12.70 mm), use a .437" (11.10 mm) Short Cap.

Contact us for sizes not listed. For caps with longer lengths, see pages 6 and 7, Long Caps.

Standard colors: Black, Red, White, Blue, Green, Orange, Yellow, Gray. Other colors available upon request.

Wire Gauge Sizing

Wire Gauge	Wire O.D. In Inches	Vinyl Tip I. D. In Inches	
		Snug-fit	Tight-fit
1	.2830	.281	.250
2	.2625	.250	.234
3	.2437	.234	.207
4	.2253	.207	.187
5	.2070	.187	.187
6	.1920	.187	.172
7	.1770	.172	.156
8	.1620	.156	.137
9	.1483	.137	.137
10	.1350	.125	.125
11	.1205	.112	.112
12	.1055	.093	.093
13	.0915	.080	.080
14	.0800	.062	.062
15	.0720	.062	.062



Long Caps

Made of tough, flexible vinyl, Long Caps are available in lengths up to 24" long. These caps are ideal for covering long bolts or providing a clean finish to the end of a tube. Our double-dip process can be utilized to achieve two-color or dual durometer parts.

Product Features

- Thousands of sizes
- Wide variety of color choices
- Available in high temperature resistant material
- Can be imprinted, punched, or sliced to meet your specifications
- Hundreds of design possibilities including varying:
 - wall thickness
 - hardness
 - inside length
 - surface texture

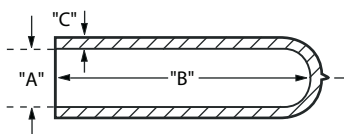
Applications

- Thread Protectors
- Masks (for painting, plating, coating, shot blasting)
- Insulators



Long Caps - Round End

Inside Diameter "A"		Max Inside Length "B"		Nominal Wall Thickness "C"			
				(At Min Length)		(At Max Length)	
In.	mm	In ± .062	mm ± 1.57	In ± .010	mm ± 0.25	In ± .010	mm ± 0.25
.165	4.19	3.500	88.90	.055	1.40	.055	1.40
.187	4.75	3.500	88.90	.055	1.40	.055	1.40
.207	5.26	3.500	88.90	.055	1.40	.055	1.40
.250	6.35	4.250	107.95	.060	1.52	.065	1.65
.305	7.75	7.000	177.80	.060	1.52	.065	1.65
.313	7.95	6.250	158.75	.060	1.52	.065	1.65
.375	9.53	7.000	177.80	.065	1.65	.075	1.91
.437	11.10	5.250	133.35	.065	1.65	.075	1.91
.500	12.70	5.250	133.35	.065	1.65	.075	1.91
.562	14.27	5.250	133.35	.065	1.65	.075	1.91
.600	15.24	5.750	146.05	.065	1.65	.075	1.91
.625	15.88	11.000	279.40	.065	1.65	.075	1.91
.687	17.45	5.250	133.35	.065	1.65	.075	1.91
.750	19.05	11.000	279.40	.065	1.65	.075	1.91
.812	20.63	8.500	215.90	.070	1.78	.080	2.03
.843	21.41	10.000	254.00	.070	1.78	.080	2.03
.875	22.23	8.500	215.90	.070	1.78	.080	2.03
.937	23.80	11.000	279.40	.070	1.78	.080	2.03
1.000	25.40	8.500	215.90	.070	1.78	.080	2.03
1.062	26.97	5.250	133.35	.065	1.65	.075	1.91
1.125	28.58	5.250	133.35	.065	1.65	.075	1.91
1.250	31.75	5.250	133.35	.065	1.65	.075	1.91
1.500	38.10	5.250	133.35	.065	1.65	.075	1.91
1.625	41.28	5.250	133.35	.065	1.65	.075	1.91

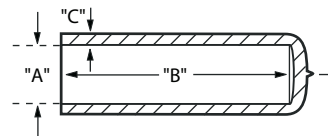


NOTE: "B" dimension-Inside length is measured to center of closed end. The length tolerance is ± .062" (1.57 mm).



Long Caps - Flat End

Inside Diameter "A"		Max Inside Length "B"		Nominal Wall Thickness "C"			
				(At Min Length)		(At Max Length)	
In.	mm	In ± .062	mm ± 1.57	In ± .010	mm ± 0.25	In ± .010	mm ± 0.25
.187	4.75	3.500	88.90	.055	1.40	.055	1.40
.207	5.26	3.500	88.90	.055	1.40	.055	1.40
.250	6.35	4.250	107.95	.060	1.52	.065	1.65
.313	7.95	6.000	152.40	.060	1.52	.065	1.65
.375	9.53	6.000	152.40	.065	1.65	.075	1.91
.437	11.10	6.000	152.40	.065	1.65	.075	1.91
.500	12.70	8.500	215.90	.065	1.65	.075	1.91
.562	14.28	6.000	152.40	.065	1.65	.075	1.91
.610	15.50	6.750	171.45	.065	1.65	.075	1.91
.625	15.88	6.000	152.40	.065	1.65	.075	1.91
.687	17.45	6.000	152.40	.065	1.65	.075	1.91
.725	18.42	24.000	609.60	.065	1.65	.075	1.91
.730	18.54	6.000	152.40	.065	1.65	.075	1.91
.750	19.05	6.000	152.40	.065	1.65	.075	1.91
.812	20.63	6.000	152.40	.070	1.78	.080	2.03
.830	21.08	6.000	152.40	.070	1.78	.080	2.03
.843	21.41	6.000	152.40	.070	1.78	.080	2.03
.875	22.23	24.000	609.60	.070	1.78	.080	2.03
.921	23.39	24.000	609.60	.070	1.78	.080	2.03
.937	23.80	24.000	609.60	.070	1.78	.080	2.03
.950	24.13	6.000	152.40	.070	1.78	.080	2.03
1.000	25.40	24.000	609.60	.070	1.78	.080	2.03
1.062	26.98	6.000	152.40	.070	1.78	.080	2.03
1.125	28.58	24.000	609.60	.070	1.78	.080	2.03
1.187	30.15	6.000	152.40	.070	1.78	.080	2.03
1.220	30.99	10.000	254.00	.070	1.78	.080	2.03
1.250	31.75	6.000	152.40	.070	1.78	.080	2.03
1.375	34.93	6.000	152.40	.070	1.78	.080	2.03
1.500	38.10	6.000	152.40	.070	1.78	.080	2.03
1.625	41.28	6.000	152.40	.070	1.78	.080	2.03
1.687	42.84	6.000	152.40	.070	1.78	.080	2.03
1.750	44.45	6.000	152.40	.070	1.78	.080	2.03
2.000	50.80	6.000	152.40	.070	1.78	.080	2.03
2.250	57.15	6.000	152.40	.070	1.78	.080	2.03
2.500	63.50	6.000	152.40	.070	1.78	.080	2.03
2.750	69.85	6.000	152.40	.070	1.78	.080	2.03
3.000	76.20	6.000	152.40	.070	1.78	.080	2.03
3.250	82.55	6.000	152.40	.070	1.78	.080	2.03
3.500	88.90	6.000	152.40	.070	1.78	.080	2.03



NOTE: "B" dimension is measured to inside radius on Flat End Caps.

NOTE: "C" dimension is measured 1/4" (6.35 mm) from open end. Wall thickness tapers slightly heavier to closed end. Heavier or lighter wall thicknesses are available upon request.

Long Caps should be sized to match the O.D. (outside diameter) of your part. Example: If your O.D. is 5/8" (15.88 mm), use a .625" (15.88 mm) Long Cap.

All Long Caps are available in any length up to the maximum shown, within .062" (1.57 mm) increments.

Standard colors: Black, Red, White, Blue, Green, Orange, Yellow, Gray. Other colors available upon request.



Grab Tab Caps



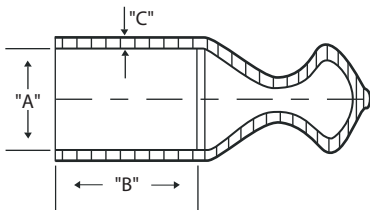
Grab Tabs have an indented tab surface, which reduces the amount of pinching pressure required during installation or removal. This quick and easy method hastens the continuous assembly operations during production. Custom options are available.

Product Features

- Large variety of color choices
- Wide range of sizes
- High temperature resistant materials are available
- Can be imprinted, punched, or sliced to meet your specifications
- Hundreds of design possibilities including varying:
 - wall thickness
 - hardness
 - inside length
 - surface texture

Grab Tab Caps

Inside Dimension "A"		Maximum Inside Length "B"		Wall Thickness "C"	
In.	mm	In. ± .062	mm ± 1.57	In. ± .010	mm ± 0.25
0.240	6.100	2.000	50.800	.055	1.40
0.302	7.670	2.000	50.800	.055	1.40
0.365	9.270	2.000	50.800	.055	1.40
0.458	11.630	2.000	50.800	.055	1.40
0.490	12.450	2.000	50.800	.055	1.40
0.552	14.020	2.000	50.800	.055	1.40
0.615	15.620	2.000	50.800	.055	1.40
0.677	17.200	2.000	50.800	.055	1.40
0.735	18.670	2.000	50.800	.055	1.40
0.750	19.050	2.000	50.800	.055	1.40



NOTE: "B" length is available in .062" (1.57mm) increments. Length tolerance is ± .062" (1.57 mm). Wall thickness "C" is measured approximately .250" (6.35 mm) from open end.

Standard colors: Black, Red, White, Blue, Green, Orange, Yellow, Gray. Other colors available upon request.

Applications

- Paint masks - wet paint, e-coat and powder coating
- Thread protectors
- Shipping and storage protectors



End Caps



Use C Series End Caps to protect threaded or non-threaded tubing, rods, pipe or shipping tubes. Snug friction grip provides low cost protection.

Product Features

- Low cost
- Use on parts with or without threads
- Excellent protection

Applications

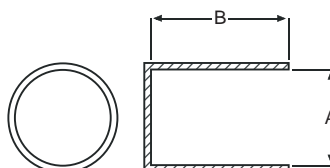
- Tubing, rods, pipes and shipping containers

End Caps

Part Number	"A"		"B"		Ready to Ship
	In.	mm.	In.	mm.	
C-1/8	0.125	3.18	0.590	14.99	✓
C-5/32	0.156	3.96	0.560	14.22	✓
C-3/16	0.187	4.75	0.590	14.99	✓
C-7/32	0.219	5.56	0.750	19.05	✓
C-1/4	0.250	6.35	0.880	22.35	✓
C-9/32	0.281	7.14	0.750	19.05	✓
C-5/16	0.313	7.95	0.880	22.35	✓
C-3/8	0.375	9.53	0.880	22.35	✓
C-7/16	0.438	11.13	0.880	22.35	✓
C-1/2	0.500	12.70	0.880	22.35	✓
C-9/16	0.563	14.30	0.880	22.35	✓
C-5/8	0.625	15.88	0.880	22.35	✓
C-11/16	0.687	17.45	0.880	22.35	✓
C-23/32	0.718	18.24	0.715	18.16	✓
C-3/4	0.750	19.05	0.880	22.35	✓
C-25/32	0.781	19.84	1.000	25.40	✓
C-13/16	0.813	20.65	0.880	22.35	✓
C-7/8	0.875	22.23	0.880	22.35	✓
C-15/16	0.938	23.83	1.000	25.40	✓
C-1	1.000	25.40	1.000	25.40	✓

End Caps Continued

Part Number	"A"		"B"		Ready to Ship
	In.	mm.	In.	mm.	
C-1-1/16	1.063	27.00	1.000	25.40	✓
C-1-1/8	1.125	28.58	1.000	25.40	✓
C-1-3/16	1.187	30.15	1.000	25.40	✓
C-1-1/4	1.250	31.75	1.000	25.40	✓
C-1-5/16	1.312	33.32	1.000	25.40	✓
C-1-3/8	1.375	34.93	1.000	25.40	✓
C-1-1/2	1.500	38.10	1.000	25.40	✓
C-1-5/8	1.625	41.28	1.000	25.40	✓
C-1-3/4	1.750	44.45	1.000	25.40	✓
C-1-7/8	1.875	47.63	1.000	25.40	✓
C-2	2.000	50.80	0.880	22.35	✓
C-2-1/8	2.125	53.98	1.000	25.40	✓
C-2-1/4	2.250	57.15	0.880	22.35	✓
C-2-3/8	2.375	60.33	0.880	22.35	✓
C-2-1/2	2.500	63.50	0.880	22.35	✓
C-2-3/4	2.750	69.85	1.000	25.40	✓
C-3	3.000	76.20	1.000	25.40	✓
C-3-1/8	3.125	79.38	1.380	35.05	✓
C-3-1/4	3.250	82.55	1.250	31.75	✓
C-3-1/2	3.500	88.90	1.380	35.05	✓



Tear Caps

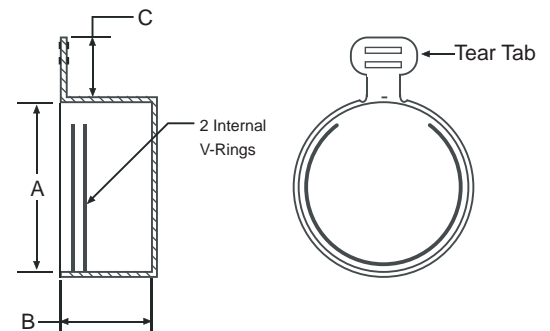
Versatile, polyethylene Tear Caps are available for pipe threads and standard threads. Caps have a side tab that tears away when pulled down.

Product Features

- Available in over 20 sizes.
- Sizes available to fit both SAE and NPT thread sizes.
- Economical
- Easily removable

Applications

- Rods
- Pipes
- Tubing



NPT Sizes

Part Number	Thread Size	"B"		Ready to Ship
		In.	mm	
CZ-1/8	1/8	0.320		✓
CZ-1/4	1/4	0.490		✓
CZ-3/8	3/8	0.490		✓
CZ-1/2	1/2	0.645		✓
CZ-3/4	3/4	0.650		✓
CZ-1	1	0.820		✓
CZ-1-1/4	1-1/4	0.820		✓
CZ-1-1/2	1-1/2	0.830		✓
CZ-2	2	0.820		✓

Tear Caps

Part Number	Thread Size	"A"		"B"		"C"		Ready to Ship
		In.	mm	In.	mm	In.	mm	
CZ-5	3/8-24	0.365	9.27	0.440	11.18	0.421	10.69	✓
CZ-10	7/16-20	0.427	10.85	0.440	11.18	0.421	10.69	✓
CZ-15	1/2-20	0.490	12.45	0.495	12.57	0.421	10.69	✓
CZ-20	9/16-18	0.552	14.02	0.475	12.07	0.421	10.69	✓
CZ-25	5/8-18	0.615	15.62	0.480	12.19	0.421	10.69	✓
CZ-30	11/16-16	0.677	17.20	0.475	12.07	0.421	10.69	✓
CZ-35	3/4-16	0.740	18.80	0.560	14.22	0.421	10.69	✓
CZ-40	13/16-12	0.802	20.37	0.560	14.22	0.421	10.69	✓
CZ-45	7/8-14	0.865	21.97	0.700	17.78	0.421	10.69	✓
CZ-50	1-14	0.990	25.15	0.695	17.65	0.421	10.69	✓
CZ-55	1-1/16	1.052	26.72	0.830	21.08	0.421	10.69	✓
CZ-60	1-3/16-12	1.177	29.90	0.750	19.05	0.421	10.69	✓
CZ-65	1-5/16-12	1.302	33.07	0.740	18.80	0.421	10.69	✓
CZ-70	1-7/16-12	1.427	36.25	0.750	19.05	0.421	10.69	✓
CZ-75	1-5/8-12	1.615	41.02	0.825	20.96	0.421	10.69	✓
CZ-80	1-11/16-12	1.677	42.60	0.825	20.96	0.421	10.69	✓
CZ-85	1-7/8-12	1.865	47.37	0.940	23.88	0.421	10.69	✓
CZ-90	2-1/2-12	2.490	63.25	1.200	30.48	0.421	10.69	✓

Rubber Seal Plugs

Rubber Seal Plugs are designed for plugging copper tubing and components in the A/C and refrigeration industry. Standard color is black, but custom colors are available. Application Specialists are available to guide you in making the right selection.



Product Features

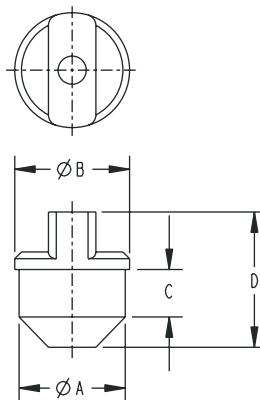
- Hole in tab allows for use of plunger for insertion of gases
- Special material blend reseals after needle insertion of gases
- Tab allows for ease of removal

Applications

- Copper tubing, dryers, filters
- Air Conditioning industry
- Refrigeration industry

Rubber Seal Plugs

"A" Plug O.D.		"B" Flange O.D.		"C" Side Height		"D" Overall Length	
In.	mm	In.	mm	In.	mm	In.	mm
0.234	5.944	0.375	9.525	0.375	9.525	0.906	23.012
0.313	7.950	0.413	10.490	0.438	11.125	1.063	27.000
0.335	8.509	0.435	11.049	0.438	11.125	1.063	27.000
0.375	9.525	0.475	12.065	0.438	11.125	1.063	27.000
0.470	11.938	0.570	14.478	0.438	11.125	1.188	30.175
0.610	15.494	0.710	18.034	0.490	12.446	1.261	32.029
0.628	15.951	0.750	19.050	0.688	17.475	1.495	37.973
0.703	17.856	0.783	19.888	0.438	11.125	1.187	30.150
0.828	21.031	0.908	23.063	0.438	11.125	1.187	30.150
0.980	24.892	1.060	26.924	0.438	11.125	1.249	31.725
1.125	28.575	1.375	34.925	0.750	19.050	1.619	41.123



Side Pull Plugs



This series of polyethylene plugs are designed for easy removal in those hard to reach locations.

Product Features

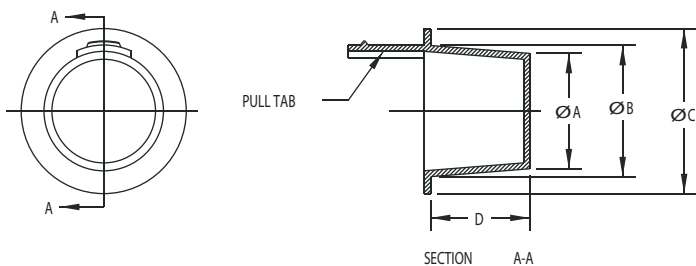
- Ideal for NPT and standard threads
- Side pull aids in removal
- Available in sizes from 3/8" to 2" diameter

Applications

- Thread Protectors
- Tubing End Protectors
- Hydraulic Fittings

Side Pull Plugs

Part Number	Common Plug Application	"A"		"B"		"C"		"D"		Ready to Ship
		In.	mm	In.	mm	In.	mm	In.	mm	
PS-30	3/8 Std. Thread	0.299	7.59	0.365	9.27	0.500	12.70	0.380	9.65	✓
PS-40	1/8 NPT	0.330	8.38	0.396	10.06	0.530	13.46	0.380	9.65	✓
PS-55	-	0.390	9.91	0.456	11.58	0.590	14.99	0.380	9.65	✓
PS-60	1/4 NPT, 1/2 Std. Thread	0.419	10.64	0.485	12.32	0.630	16.00	0.380	9.65	✓
PS-65	-	0.447	11.35	0.513	13.03	0.660	16.76	0.380	9.65	✓
PS-70	9/16 Std. Thead	0.471	11.96	0.547	13.89	0.690	17.53	0.440	11.18	✓
PS-80	5/8 Std. Thread	0.532	13.51	0.608	15.44	0.750	19.05	0.440	11.18	✓
PS-90	3/8 NPT	0.550	13.97	0.631	16.03	0.750	19.05	0.470	11.94	✓
PS-100	-	0.580	14.73	0.667	16.94	0.810	20.57	0.500	12.70	✓
PS-120	-	0.675	17.15	0.755	19.18	0.880	22.35	0.500	12.70	✓
PS-125	1/2 NPT	0.690	17.53	0.788	20.02	0.940	23.88	0.560	14.22	✓
PS-165	3/4 NPT	0.866	22.00	0.975	24.77	1.130	28.70	0.630	16.00	✓
PS-170	-	0.915	23.24	1.040	26.42	1.160	29.46	0.690	17.53	✓
PS-190	1 NPT	1.094	27.79	1.215	30.86	1.410	35.81	0.750	19.05	✓
PS-200	-	1.175	29.85	1.284	32.61	1.440	36.58	0.630	16.00	✓
PS-240	1-1/4 NPT	1.447	36.75	1.600	40.64	1.750	44.45	0.880	22.35	✓
PS-275	1-1/2 NPT	1.780	45.21	1.950	49.53	2.130	54.10	1.000	25.40	✓



T-Plugs

T-Plugs are an excellent option when you need a low-cost, effective product to protect tubing ends, threads and ports during shipping and storage. The tapered design goes on easily and stays put.

Product Features

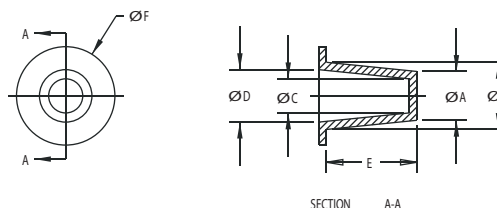
- Fits most SAE type fittings, NPT threads and unthreaded standard weight pipe
- Also suitable for JIC/UNF and BSP thread fittings
- Can be used as a cap or a plug

Applications

- Tube ends
- Shipping and storage protection



Ready to Ship millions in stock!



T-Plugs

Part Number	As Plug				As Cap				Depth "E"		Flange "F"		Common Applications		Ready to Ship
	"A"		"B"		"C"		"D"						As Plug	As Cap	
	In.	mm	In.	mm	In.	mm	In.	mm	In.	mm	In.	mm			
T-5	0.116	2.95	0.182	4.62	0.053	1.35	0.120	3.05	0.380	9.65	0.310	7.87			✓
T-10	0.145	3.68	0.205	5.21	0.079	2.01	0.150	3.81	0.380	9.65	0.410	10.41			✓
T-15	0.173	4.39	0.240	6.10	0.111	2.82	0.177	4.50	0.380	9.65	0.380	9.65			✓
T-17	0.187	4.75	0.251	6.38	0.124	3.15	0.196	4.98	0.345	8.76	0.372	9.45			✓
T-18	0.209	5.31	0.266	6.76	0.148	3.76	0.212	5.38	0.347	8.81	0.435	11.05			✓
T-20	0.236	5.99	0.302	7.67	0.174	4.42	0.240	6.10	0.380	9.65	0.440	11.18	5/16 std thrd		✓
T-25	0.267	6.78	0.335	8.51	0.205	5.21	0.273	6.93	0.380	9.65	0.470	11.94			✓
T-30	0.299	7.59	0.365	9.27	0.235	5.97	0.302	7.67	0.380	9.65	0.500	12.70	3/8 std thrd	15/64 std thrd	✓
T-40	0.330	8.38	0.396	10.06	0.267	6.78	0.333	8.46	0.380	9.65	0.530	13.46	1/8 NPT		✓
T-45	0.361	9.17	0.427	10.85	0.298	7.57	0.365	9.27	0.380	9.65	0.560	14.22	7/16 std thrd		✓
T-55	0.390	9.91	0.456	11.58	0.327	8.31	0.394	10.01	0.380	9.65	0.590	14.99		3/8 std thrd	✓
T-60	0.419	10.64	0.485	12.32	0.356	9.04	0.422	10.72	0.380	9.65	0.630	16.00	1/4 NPT- 1/2 std thrd	1/8 NPT	✓
T-65	0.447	11.35	0.513	13.03	0.385	9.78	0.451	11.46	0.380	9.65	0.660	16.76		7/16 std thrd	✓
T-70	0.471	11.96	0.547	13.89	0.409	10.39	0.485	12.32	0.440	11.18	0.690	17.53	9/16 std thrd	1/2 std thrd	✓
T-75	0.500	12.70	0.576	14.63	0.440	11.18	0.516	13.11	0.440	11.18	0.720	18.29			✓
T-80	0.532	13.51	0.608	15.44	0.468	11.89	0.545	13.84	0.440	11.18	0.750	19.05	5/8 std thrd	1/4 NPT	✓
T-90	0.550	13.97	0.631	16.03	0.487	12.37	0.568	14.43	0.470	11.94	0.750	19.05	3/8 NPT	9/16 std thrd	✓
T-100	0.580	14.73	0.667	16.94	0.518	13.16	0.605	15.37	0.500	12.70	0.810	20.57		5/8 std thrd	✓
T-105	0.610	15.49	0.695	17.65	0.549	13.94	0.634	16.10	0.500	12.70	0.840	21.34			✓
T-110	0.640	16.26	0.727	18.47	0.578	14.68	0.664	16.87	0.500	12.70	0.880	22.35	3/4 std thrd		✓

T-Plugs Continued

Part Number	As Plug				As Cap				Depth "E"		Flange "F"		Common Applications		Ready to Ship
	"A"		"B"		"C"		"D"						As Plug	As Cap	
	In.	mm	In.	mm	In.	mm	In.	mm	In.	mm	In.	mm			
T-120	0.675	17.15	0.755	19.18	0.613	15.57	0.693	17.60	0.500	12.70	0.880	22.35		3/8 NPT	✓
T-125	0.690	17.53	0.788	20.02	0.628	15.95	0.726	18.44	0.560	14.22	0.940	23.88	1/2 NPT		✓
T-130	0.725	18.42	0.823	20.90	0.663	16.84	0.761	19.33	0.560	14.22	0.970	24.64		3/4 std thrd	✓
T-140	0.750	19.05	0.848	21.54	0.687	17.45	0.785	19.94	0.560	14.22	1.000	25.40	7/8 std thrd		✓
T-145	0.802	20.37	0.911	23.14	0.740	18.80	0.849	21.56	0.630	16.00	1.060	26.92		1/2 NPT	✓
T-150	0.815	20.70	0.930	23.62	0.753	19.13	0.868	22.05	0.630	16.00	1.090	27.69		7/8 std thrd	✓
T-163	0.867	22.02	0.971	24.66	0.807	20.50	0.910	23.11	0.715	18.16	1.130	28.70	3/4 NPT		✓
T-165	0.866	22.00	0.975	24.77	0.803	20.40	0.912	23.16	0.630	16.00	1.130	28.70	3/4 NPT		✓
T-170	0.915	23.24	1.040	26.42	0.855	21.72	0.980	24.89	0.690	17.53	1.160	29.46	1-1/16 std thrd		✓
T-180	0.964	24.49	1.090	27.69	0.901	22.89	1.027	26.09	0.750	19.05	1.250	31.75			✓
T-183	0.984	24.99	1.054	26.77	0.913	23.19	0.988	25.10	0.468	11.89	1.253	31.83		3/4 NPT	✓
T-185	0.995	25.27	1.145	29.08	0.933	23.70	1.083	27.51	0.750	19.05	1.310	33.27		1-1/16 std thrd	✓
T-190	1.094	27.79	1.215	30.86	1.031	26.19	1.152	29.26	0.750	19.05	1.410	35.81	1 NPT		✓
T-200	1.175	29.85	1.284	32.61	1.113	28.27	1.222	31.04	0.630	16.00	1.440	36.58			✓
T-205	1.224	31.09	1.355	34.42	1.161	29.49	1.292	32.82	0.750	19.05	1.500	38.10	1-5/16 std thrd		✓
T-210	1.235	31.37	1.360	34.54	1.173	29.79	1.298	32.97	0.810	20.57	1.500	38.10		1 NPT - 1-5/16 std thrd	✓
T-215	1.285	32.64	1.346	34.19	1.227	31.17	1.288	32.72	0.380	9.65	1.470	37.34			✓
T-220	1.312	33.32	1.465	37.21	1.249	31.72	1.402	35.61	0.880	22.35	1.630	41.40			✓
T-225	1.239	31.47	1.507	38.28	1.169	29.69	1.437	36.50	0.750	19.05	1.630	41.40			✓
T-240	1.447	36.75	1.600	40.64	1.384	35.15	1.537	39.04	0.880	22.35	1.750	44.45	1-1/4 NPT		✓
T-245	1.513	38.43	1.600	40.64	1.451	36.86	1.537	39.04	0.500	12.70	1.750	44.45	1-5/8 std thrd		✓
T-247	1.516	38.51	1.601	40.67	1.456	36.98	1.541	39.14	0.716	18.19	1.753	44.53			✓
T-250	1.560	39.62	1.682	42.72	1.498	38.05	1.620	41.15	0.750	19.05	1.880	47.75	1-3/4 std thrd	1-1/4 NPT - 1-5/8 std thrd	✓
T-255	1.630	41.40	1.750	44.45	1.568	39.83	1.688	42.88	0.750	19.05	1.940	49.28			✓
T-265	1.750	44.45	1.880	47.75	1.688	42.88	1.818	46.18	0.750	19.05	2.000	50.80			✓
T-270	1.781	45.24	1.805	45.85	1.722	43.74	1.746	44.35	0.380	9.65	2.000	50.80	1-1/2 NPT-1-7/8 std thrd		✓
T-275	1.780	45.21	1.950	49.53	1.718	43.64	1.888	47.96	1.000	25.40	2.130	54.10		1-1/2 NPT - 1-7/8 std thrd	✓
T-280	1.844	46.84	2.000	50.80	1.781	45.24	1.938	49.23	1.000	25.40	2.130	54.10			✓
T-285	1.900	48.26	2.076	52.73	1.837	46.66	2.013	51.13	1.000	25.40	2.250	57.15			✓
T-295	1.975	50.17	2.132	54.15	1.913	48.59	2.070	52.58	1.000	25.40	2.250	57.15			✓
T-300	2.015	51.18	2.147	54.53	1.953	49.61	2.085	52.96	0.750	19.05	2.310	58.67			✓
T-305	2.067	52.50	2.243	56.97	2.005	50.93	2.181	55.40	1.000	25.40	2.440	61.98	2-1/4 std thrd		✓
T-310	2.125	53.98	2.406	61.11	2.063	52.40	2.344	59.54	1.000	25.40	2.530	64.26	2 NPT		✓
T-315	2.136	54.25	2.312	58.72	2.074	52.68	2.250	57.15	1.000	25.40	2.560	65.02		2-1/4 std thrd	✓
T-320	2.230	56.64	2.260	57.40	2.168	55.07	2.198	55.83	0.500	12.70	2.500	63.50			✓
T-325	2.298	58.37	2.464	62.59	2.235	56.77	2.401	60.99	1.000	25.40	2.630	66.80		2 NPT	✓
T-330	2.307	58.60	2.650	67.31	2.245	57.02	2.588	65.74	1.250	31.75	2.780	70.61		2-1/2 std thrd	✓
T-335	2.395	60.83	2.602	66.09	2.333	59.26	2.540	64.52	1.030	26.16	2.810	71.37			✓
T-340	2.457	62.41	2.750	69.85	2.395	60.83	2.688	68.28	1.000	25.40	2.880	73.15			✓
T-345	2.480	62.99	2.644	67.16	2.418	61.42	2.582	65.58	0.630	16.00	2.780	70.61			✓
T-350	2.555	64.90	2.690	68.33	2.493	63.32	2.628	66.75	0.630	16.00	2.880	73.15			✓
T-355	2.641	67.08	2.790	70.87	2.579	65.51	2.728	69.29	0.750	19.05	2.940	74.68	2-1/2 NPT.		✓
T-360	2.760	70.10	3.005	76.33	2.685	68.20	2.947	74.85	1.000	25.40	3.150	80.01	3 std thrd		✓
T-365	2.849	72.36	2.980	75.69	2.787	70.79	2.918	74.12	0.750	19.05	3.250	82.55		2-1/2 NPT	✓
T-370	2.975	75.57	3.103	78.82	2.915	74.04	3.041	77.24	0.750	19.05	3.340	84.84			✓
T-375	2.982	75.74	3.245	82.42	2.912	73.96	3.175	80.65	1.000	25.40	3.380	85.85			✓
T-380	3.090	78.49	3.370	85.60	3.020	76.71	3.300	83.82	1.000	25.40	3.500	88.90			✓
T-385	3.270	83.06	3.562	90.47	3.200	81.28	3.492	88.70	1.130	28.70	3.690	93.73	3 NPT		✓
T-390	3.325	84.46	3.457	87.81	3.245	82.42	3.377	85.78	0.750	19.05	3.630	92.20		3 NPT	✓
T-395	3.470	88.14	3.600	91.44	3.410	86.61	3.540	89.92	0.750	19.05	3.880	98.55			✓
T-405	3.680	93.47	3.800	96.52	3.610	91.69	3.730	94.74	0.750	19.05	4.000	101.60			✓
T-410	3.790	96.27	3.920	99.57	3.710	94.23	3.840	97.54	0.750	19.05	4.120	104.65	3-1/2 NPT	3-1/2 NPT	✓
T-415	3.930	99.82	4.070	103.38	3.860	98.04	4.000	101.60	0.750	19.05	4.380	111.25			✓
T-420	4.020	102.11	4.140	105.16	3.940	100.08	4.070	103.38	0.750	19.05	4.530	115.06			✓
T-430	4.270	108.46	4.430	112.52	4.180	106.17	4.340	110.24	0.880	22.35	4.880	123.95	4 NPT		✓
T-435	4.370	111.00	4.620	117.35	4.290	108.97	4.540	115.32	1.000	25.40	5.000	127.00		4 NPT	✓

EPDM Caps

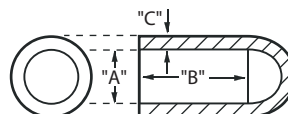
Providing superior chemical resistance, EPDM Caps are the ideal choice for caps that will be exposed to a harsh environment.

Product Features

- Withstands temperatures to 475°F (246°C)
- Custom sizes available

Applications

- Ideal for plating applications
- Masking and industrial applications requiring high chemical and heat resistance



EPDM Caps

Part Number	Inside Diameter "A"		Inside Length "B"		Wall Thickness "C"		Ready to Ship
	In.	mm	In.	mm	In.	mm	
395294	0.062	1.57	0.750	19.05	0.060	1.52	
878371	0.070	1.78	1.000	25.40	0.060	1.52	
488677	0.093	2.36	0.750	19.05	0.060	1.52	
381905	0.100	2.54	0.500	12.70	0.060	1.52	✓
019752	0.109	2.77	0.750	19.05	0.060	1.52	✓
743668	0.125	3.18	0.500	12.70	0.060	1.52	
036893	0.125	3.18	1.000	25.40	0.060	1.52	✓
310745	0.140	3.56	1.000	25.40	0.043	1.09	✓
960788	0.140	3.56	0.500	12.70	0.060	1.52	✓
150729	0.148	3.76	1.000	25.40	0.060	1.02	
426128	0.156	3.96	1.000	25.40	0.060	1.52	✓
001564	0.156	3.96	0.500	12.70	0.060	1.52	✓
159708	0.172	4.37	0.500	12.70	0.060	1.52	✓
342132	0.172	4.37	1.000	25.40	0.060	1.52	✓
855838	0.187	4.75	0.500	12.70	0.060	1.52	✓
386187	0.187	4.75	1.000	25.40	0.060	1.52	✓
133005	0.218	5.54	1.000	25.40	0.060	1.52	
064178	0.223	5.66	1.000	25.40	0.060	1.52	✓
393866	0.234	5.94	1.000	25.40	0.060	1.52	✓
633127	0.234	5.94	1.500	38.10	0.060	1.52	
686163	0.250	6.35	1.000	25.40	0.060	1.52	✓
097400	0.281	7.14	1.000	25.40	0.060	1.52	✓
648560	0.295	7.49	1.000	25.40	0.057	1.45	
295105	0.295	7.49	1.500	38.10	0.057	1.45	
995137	0.313	7.95	1.000	25.40	0.060	1.52	✓
349180	0.340	8.64	1.000	25.40	0.060	1.52	
965590	0.355	9.02	1.500	38.10	0.060	1.52	✓

EPDM Caps Continued

Part Number	Inside Diameter "A"		Inside Length "B"		Wall Thickness "C"		Ready to Ship
	In.	mm	In.	mm	In.	mm	
053949	0.375	9.53	1.000	25.40	0.060	1.52	✓
025310	0.375	9.53	1.500	38.10	0.060	1.27	✓
372904	0.406	10.31	1.000	25.40	0.060	1.52	✓
112359	0.437	11.10	1.000	25.40	0.060	1.52	✓
315110	0.456	11.58	1.500	38.10	0.060	1.52	✓
590420	0.468	11.89	1.000	25.40	0.060	1.52	✓
480150	0.480	12.19	1.500	38.10	0.060	1.52	
318896	0.500	12.70	1.500	38.10	0.060	1.52	✓
318897	0.535	13.59	1.500	38.10	0.060	1.52	✓
757703	0.562	14.27	1.500	38.10	0.060	1.52	✓
757704	0.600	15.24	1.500	38.10	0.060	1.52	
218089	0.625	15.88	1.500	38.10	0.060	1.52	
191065	0.687	17.45	1.500	38.10	0.060	1.52	✓
009033	0.750	19.05	1.500	38.10	0.060	1.52	✓
057831	0.812	20.62	1.500	38.10	0.060	1.52	✓
090370	0.875	22.23	1.500	38.10	0.060	1.52	✓
341501	0.937	23.80	1.500	38.10	0.060	1.52	✓
292837	1.000	25.40	1.500	38.10	0.060	1.52	✓
270542	1.062	26.97	1.500	38.10	0.060	1.52	✓
292840	1.125	28.58	1.500	38.10	0.060	1.52	✓
161976	1.187	30.15	1.500	38.10	0.060	1.52	✓
422425	1.250	31.75	1.500	38.10	0.060	1.52	✓
995754	1.500	38.10	1.500	38.10	0.060	1.52	
760051	1.750	44.45	2.000	50.80	0.060	1.52	✓
322048	1.875	47.63	2.000	50.80	0.060	1.52	✓
292845	2.000	50.80	2.000	50.80	0.060	1.52	

UNITED STATES

Sinclair & Rush, Inc.
123 Manufacturers Drive
Arnold, MO 63010
Tel: 636-282-6800
Fax: 636-282-6888
e-mail: stockcap@stockcap.com

ENGLAND

Sinclair & Rush, Ltd.
Units 11-13 Spectrum West
20/20 Maidstone Business Estate
Maidstone Kent ME 16 0LL
Tel: 44-1622-693200
Fax: 44-1622-693201
e-mail: sales@sinclair-rush.co.uk

AUSTRALIA

Sinclair & Rush, Pty. Ltd.
51 Wellington Street
Riverstone 2765 NSW Sydney
Tel: 61-2-9627-3211
Fax: 61-2-9627-5156
Toll Free: 1-800-00-3211
e-mail: info@sinclair-rush.com.au

MEXICO

Sinclair & Rush
Costa Brava #35648
Col. Primavera
Monterrey, N.L. Mexico CP 64830
Tel: 52 (81) 8030-4787
Sin Costo: 01 (800) 021-8272
Fax: 52 (81) 8030-4796
e-mail: ventas@sinclair-rush.com-mx

SPAIN

Sinclair & Rush Espana SL
Alberto Alcocer, 24 - 5o
28036 Madrid
Tel: +34 91 458 36 49
Fax: +34 91 344 04 76
e-mail: pnavarro@sinclair-rush-es.com

GERMANY

Sinclair & Rush GmbH
Viersener Str. 3
D-47929 Grefrath
Germany
Tel: 49 2158 69240
Fax: 49 2158 692410
e-mail: stockcap@t-online.de

STOCKCAP
A Sinclair & Rush Company

1-800-827-CAPS (2277)
WWW.STOCKCAP.COM